

READINGS

**First Reading:** (Isa 11:2)  
The spirit of the LORD shall rest upon him: a spirit of wisdom and of understanding, a spirit of counsel and of strength, a spirit of knowledge and of fear of the LORD.  
**Psalm:** (Ps 72)  
Justice shall flourish in his time, and fullness of peace forever.  
**Second Reading:** (Romans 15:7)  
Welcome one another, then, as Christ welcomed you, for the glory of God.  
**Gospel:** (Mt 3:11)  
“I am baptizing you with water, for repentance, but the one who is coming after me is mightier than I.”

MASS INTENTIONS

C = CHESTER \* EG = ELLIS GROVE \*  
J = PR DU ROCHER

**Saturday, Dec. 6**  
**4:00PM (C)** Pat Kickham by Kathy Albrecht  
**6:00PM (J)** Carol Dufrenne & Clara Stefani  
**Sunday, Dec. 7**  
**8:00AM-(EG)**  
**10:00AM (C)** Roy Turner by Terry Riebeling  
**5:00PM (C)** Ruth Petrowske by Family  
**Monday, Dec. 8**  
**8:15AM (C)** Paul Herzog by Mike & Anita Bievenue  
**Tuesday, Dec. 9**  
**8:30AM** Bob Ellner  
**Wednesday, Dec. 10**  
**8:15AM (C)** Roger Petrowske by the Family  
**Thursday, Dec. 11**  
**8:00AM (C)** Harry Marquardt  
**Friday, Dec. 12**  
NO MASS  
**Saturday, Dec. 13**  
**4:00PM (C)** Steve Kickham by Kathy Albrecht  
**6:00PM (J)** Jim Sirtak & Fr. Dan Jurek  
**Sunday, Dec. 14**  
**8:00AM-(EG)**  
**10:00AM (C)** Rick Reed by Lois Reed  
**5:00PM (C)** Ruth Petrowske by the Family

MASS SCHEDULE ~ December

**Saturday:** 4pm: Chester 6pm: Prairie du Rocher  
**Sunday:** 8am: Ellis Grove 10am: Chester

GOSPEL REFLECTIONS

The first reading (Isaiah 11: 1-10) calls us to look to the coming of the Messiah with hope. He will not look at us with prejudice, preconceived ideas and mistrust. Rather than turning us against, the Messiah will bring us peace, harmony and concord.

The second reading (Romans 15: 4-9) talks about the virtue of hope. The Messiah is coming to bring to fulfilment the promises and prophecies of the Patriarchs. Saint Paul encourages us to welcome others the same way we were received in Christ.

In the Gospel (Matthew 3: 1-12) John the Baptist goes on an overdrive. His preaching of the good news had drawn crowds from across the region. No one was exempt including the skeptical Pharisees and Sadducees. The coming of the Messiah will be great. No one will be left behind. Amen.

PARTNERSHIP EVENTS

**Volunteer Opportunity:** We are looking for someone who is interested in promoting pro-life values, raising awareness and the issues of families and mothers in need. If you are interested in becoming a Pro-Life Coordinator for the Parish Partnership, please contact your parish office.

IMMACULATE CONCEPTION MASS SCHEDULE

Monday December 8<sup>th</sup>  
8:15AM~ Chester 7PM ~Prairie du Rocher

OCIA

Interested in becoming Catholic or learning more about the Catholic Faith? St. Mary’s in Chester is planning to offer O.C.I.A. (Order of Christian Initiation for Adults) starting this September. Please call the parish office or contact Brad for more info: [bradcolvis@gmail.com](mailto:bradcolvis@gmail.com).

CONFESSIONS

**St. Joseph:** Tuesday & Thursday mornings & Sat. evenings after Mass or by appt.  
**St. Mary’s (C):** Saturday evenings before Mass 3:15pm-3:45pm  
*Any other confessions can be made by appointment.*

ADORATION

\*\*\*All Are Welcome\*\*\*

**St. Joseph:** First Monday of every month @ 7PM  
**St. Mary’s (C):** First Tuesday of every month @ 7PM  
**St. Mary’s School:** The First Friday of every month at 8:30am

MASS OF HEALING

First weekend of the month following each Mass.



POINSETTIA PICK UP

**Sat. Dec. 6<sup>th</sup>** 4pm- Chester  
**Sun. 7<sup>th</sup>** 8am- Ellis Grove

6pm- PDR 10am- Chester  
*Thank you to all who helped us reach our goal!*  
Youth group Christmas Party will be on Sunday Dec. 14<sup>th</sup> from 5-7pm

**We have a Facebook Page:** If you or your family would like to join, please let Jill Whelan (618-719-9344) or Dawn Walker (618-317-5104) know so we can send you an invite.

STEWARDSHIP IN ACTION

COMMUNION

If you are unable to attend Mass and would like to receive communion contact: Diane Mudd 284-7150 (Ruma), Leonard DeRousse 284-6655 before 7pm (Prairie du Rocher), Rosemary Bert 615-6135, Paula Platt 615-5545, Martha McDonald 615-6624 or Barb Otten 615-2442 (Chester).

PRAYER CHAIN

If you need the emergency power of prayer or want to belong to the prayer chain, please call Marie Henry 618-282-2876 or 618-559-6511 (Prairie du Rocher) or Rosemary Bert 618-615-6135 or Martha McDonald 618-615-6624 (Chester).

WOMEN’S SUPPORT GROUP

Meetings are held the third Thursday of every month at 10am at Linda Stern’s home, 106 Hillcrest Dr., Chester. Come and connect with others who are making their way since losing their spouses. If you have any questions, call Linda (618-201-2957) or Martha McDonald (618-615-6624).

PRAYER REQUEST

The homebound, nursing home residents, cancer patients, our military, the lonely, the homeless, those incarcerated.  
Donna Schweizer, Terry Moore, Mike Vasquez,  
Tom Sauer, Mary Beck, Bruce Kettmann,  
Jaci Bert, Amanda Loudenback, Sonny & Roseann Glenn,  
Judy Kempfer, Peggy Helmers,  
Evelyn Marquardt, Roger Knott, Albert Deterding,  
Raymond Ellner, Tony Melliery, Craig Purcell,  
Bill & Erlene Hanger, Julia Hartman, Savanna Zieger,  
Sharon Bryant, Huckson McGee

BIRTHDAYS & ANNIVERSARY’S

Ray Wiegard 12/7, Mason Howie 12/7, Mary Steibel 12/8, Darla Wilson 12/8, Mary Melliery 12/9, Bill Gross 12/9, Kathryn Sauerhage 12/9, Shelly Hoops 12/10, Ardell Roy 12/11, Verilyn Proctor 12/11, Mike Welge 12/11, Robert Schweizer 12/11, Jennifer Surman 12/12  
Toby & Jase Tindall 12/7

ST. JOSEPH, PRAIRIE DU ROCHER EVENTS

Weekly Tithes & Offerings

Online Giving ~ [www.stjoespdr.org](http://www.stjoespdr.org)

**St. Joseph’s: Weekly Goal: \$1700 Beginning 7/1/2025**  
Envelopes (36) \$1548 Loose: \$202, Flowers: \$556  
**YTD:** goal: \$37,400 collected: \$37,496

Liturgical Calendar ~ St. Joseph

**Dec. 6<sup>th</sup>** (S) Confirmation Class (L) Confirmation Class (B) Audrey, (C) Carol & Mary  
**Dec. 13<sup>th</sup>** (S) Jack, Lilly & Lexie (L) Katie, (B) Marie, (C) Carla & Leonard



**Parents,** PSR starts promptly at 7:15am  
Jill will arrive at 7am to open.  
PSR confessions for grades 2-8 will be on Tuesday Dec. 9<sup>th</sup>. Last day of PSR for the year will be Tuesday December 16<sup>th</sup> we end with a Mass

In Deepest Sympathy

*We offer our sincere condolences to Millida Ellner on the recent loss of her father Alfred Moureau Sr. May the Lord grant them comfort during this most difficult time. May he rest in peace.*

ST. MARY’S CHESTER EVENTS

Weekly Tithes & Offerings

Online Giving ~ [osvhub.com/maryhoc/funds](http://osvhub.com/maryhoc/funds)

**Weekly Goal: \$8901 ~**

**CSMA** As of 12/01/25, Financial Target, \$14,616;  
Pledged: \$18,489.30; Collected: \$18,193.30

**Mass Streaming:** Masses are being streamed on YouTube. Search *Mary Help of Christians Chester* to find the streamed Masses.

Servers Schedule

**Sat. Dec 6 ~** Addie & Gavin  
**Sun. Dec 7 ~** Kevin, Parker & Ezra  
**Sat. Dec 13 ~** Brynn & Bryce  
**Sun. Dec 14 ~** Jackson, Cody & Caroline

**Lectors & Eucharistic Ministers Schedul**  
**Sat. Dec. 6 ~** (L) Rob (H) Larry (C) Kathleen, Rob  
**Sun. Dec 7 ~** (L) Amy (H) Greg (C) Sue, Aaron, Matt, Dave  
**Mon. Dec 8 ~** (H) Norman (C) Jeannie, Bill, Kelley, Kathy  
**Sat. Dec 13 ~** (L) Linda (H) Kathleen (C) Megan, Martha  
**Sun. Dec 14 ~** (L) Dainelle (H) Sam (C) Sarah, Norman, Jeannie, Diana



### **In Deepest Sympathy**

*We offer our sincere condolences to the family and friends of Michelle Guebert, daughter of David and Sheila Surman.*

*We also offer our sincere condolences to the family and friends of Steven Schulein, brother of Bonnie Smith and Donna Jany, and nephew of Ida Gaertner. May the Lord grant them comfort during this most difficult time. May they rest in peace.*

**Baked Goods Needed:** Please drop off baked goods for the Church Tour at the Church Office on December 9 from 8a-4p or December 10 from 8a-2p. Your support is much appreciated!

**St. Mary's Council of Catholic Women Quilt of the Month:** If you would like to donate a new, hand-quilted quilt for this project, we would very much appreciate it. The 2026 Quilt of the Month Tickets are being sold at this time.

**KC Hall Monday Lunches:** Monday, 12/8/25 ~ BBQ Chicken, baked beans, pasta salad, cheesy hashbrown casserole. Served from 11 am – 1 pm. \$12/person.

**KC Monthly Meeting:** 3<sup>rd</sup> Thursday of every month at 6pm. On Sunday from 12 to 2 pm, dues can be paid and membership cards will be available.

**Angel Tree:** It's time to purchase your *angels*. Each beautifully crocheted angel is \$10. If you are renewing an angel(s) from previous years, the cost is \$5 per angel. Angel forms are located at the church entrance. You can return them to the collection basket or give them to Donna Ritter. All proceeds go back to the church. Last year we collected \$894!!! Thank you, Donna, for your continued dedication of creating these beautiful pieces of art that adorn our parish at Christmas. Non-payment will result in your angel(s) being removed.

**Giving Tree:** The giving tree has the names of 7 parishioners at High Point (formerly Craig Manor) and 9 at Three Springs Rehab. Center. There are also ornaments for food or baby items for the food pantry. Please bring your gifts back to church by Dec. 21<sup>st</sup>.

**St. Mary's Catholic Cemetery:** We are looking for someone who is interested in the grass mowing and upkeep of the cemetery. The position will be available starting January 1<sup>st</sup>. Anyone interested should contact the Church Office.

**Mass Intentions:** Mass intentions are \$10 each. Effort is made to accommodate specific date requests, but all cannot always be accommodated. Requests and payment can be placed in the collection basket or mailed to the Church Office.

**Chester Christian Food Pantry:** Holiday Gift Bags will be distributed throughout the month in addition to regular staples. Monetary donations are much appreciated to make this season bright for those in need!

### **ST. MARY'S CATHOLIC SCHOOL**

**Christmas Program:** Wednesday, December 10<sup>th</sup> at 6pm in the Gym.

**KC's SMS Family Christmas Party:** Friday, December 19<sup>th</sup> at 5pm.

### **AROUND THE DIOCESE**

**The 2025 Catholic Service and Ministry Appeal Hope in the Lord** Your contribution to the Catholic Service and Ministry Appeal enables the Office of Education to impact the lives of over 9,140 students at 23 Catholic grade schools, three Catholic high schools, and in PSR (Parish School of Religion) classes throughout our Belleville Diocese. If you haven't already done so, we prayerfully ask you to consider making a gift to the 2025 Appeal today. No amount is too large or too small! Thank you.

**The Messenger:** Give the gift that keeps on giving! The Messenger! To subscribe online for Family or Friends, go to: [www.bellevillemessenger.org](http://www.bellevillemessenger.org) or call (618) 233-8670.

**Annual Diocesan Christmas Collection:** The 48<sup>th</sup> Annual Diocesan Christmas Collection will be taken up at all Masses on Christmas Eve and Christmas Day. Parishes and agencies throughout the diocese can request monies from this collection during 2026 to assist those who are in need with food, clothing, shelter, utility payments, healthcare and medications, funeral and burial expenses, transportation and emergency assistance of all types. Please consider giving as you are able; thank you so much.

**Cookie Sale:** St. John's Lutheran Church in Chester will hold their annual cookie sale in the Parish Hall on December 13<sup>th</sup> from 10am until sold out.

### **THE ADVENT WREATH**

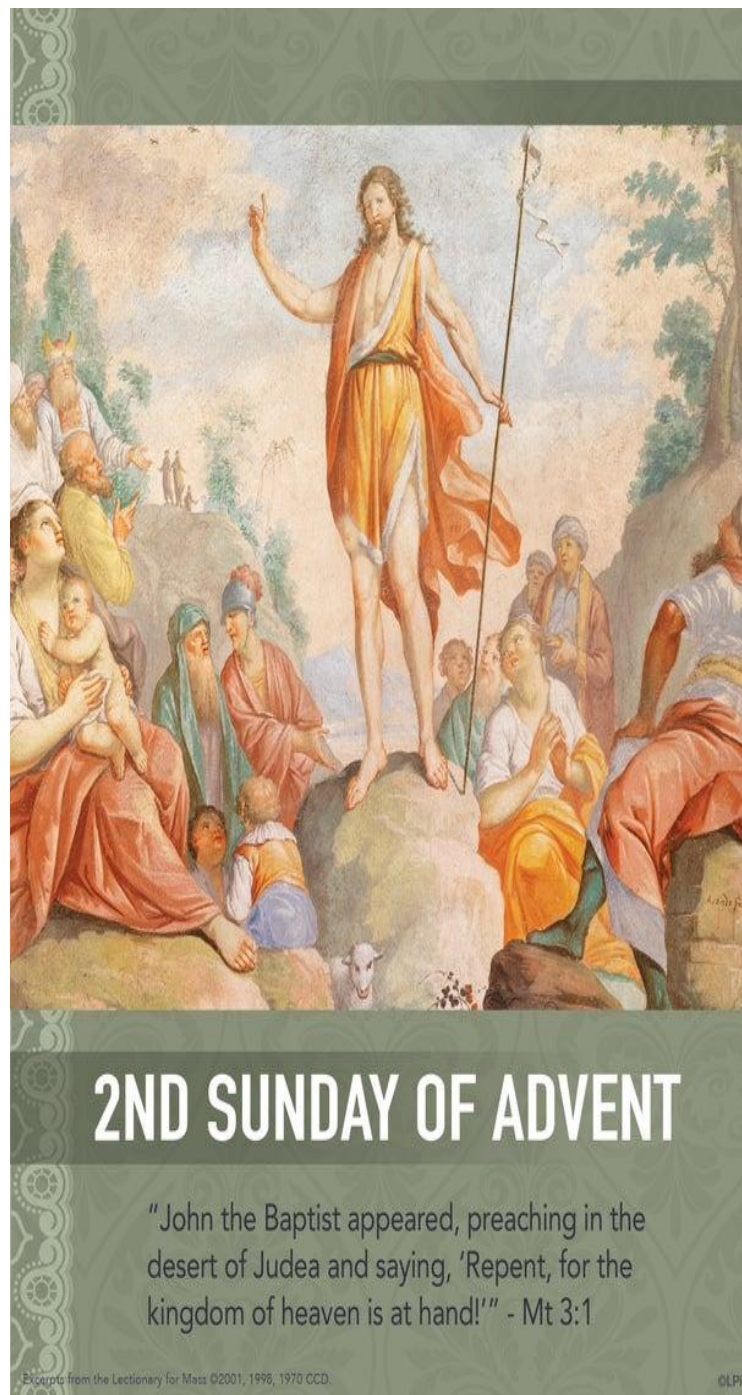
**Candle 1 ("The Prophet's Candle")** is purple, lit during the first week of Advent, and symbolizes hope.

**Candle 2 ("The Bethlehem Candle")** is purple, lit during the second week of Advent, and symbolizes peace.

**Candle 3 ("The Shepherd's Candle")** is pink or rose-colored, lit during the third week of Advent, and represents joy.

**Candle 4 ("the Angle's Candle")** is purple, lit during the fourth week of Advent, and represents love.

**Candle 5 ("Christ's candle")** is white, lit on Christmas Eve or Christmas Day, and represents the Advent child, Jesus.



**PASTOR: FR. SEBASTIAN**

Website: [www.stjmm.org](http://www.stjmm.org)

### **Mary Help of Christians**

911 Swanwick St, Chester, IL 62233

Parish Secretary: Rose Dethrow

Parish Phone: 618-826-2444

School Phone: 618-826-3120

School Website: [www.stmaryscatholicchesteril.org](http://www.stmaryscatholicchesteril.org)

Email: [Stmaryschurch@stjmm.org](mailto:Stmaryschurch@stjmm.org)

### **St. Mary of Divine Maternity**

7362 Shawneetown Trail, Ellis Grove, IL 62241

Parish Secretary: Gerry Valleroy

Deacon Al Dubois

Parish Phone: 618-859-3541

### **St. Joseph**

802 Middle St, Prairie du Rocher, IL 62277

Parish Secretary: Jill Whelan

Parish Phone: 618-284-3314

Email : [sjospdr@htc.net](mailto:sjospdr@htc.net)

Website : [www.stjoespdr.org](http://www.stjoespdr.org)

*We extend a very warm welcome  
to all those who are new to our parishes.  
We would love for you to become  
permanent members of our  
Parish Partnership Family!  
Please contact the Parish Secretary  
at the office number listed above.*